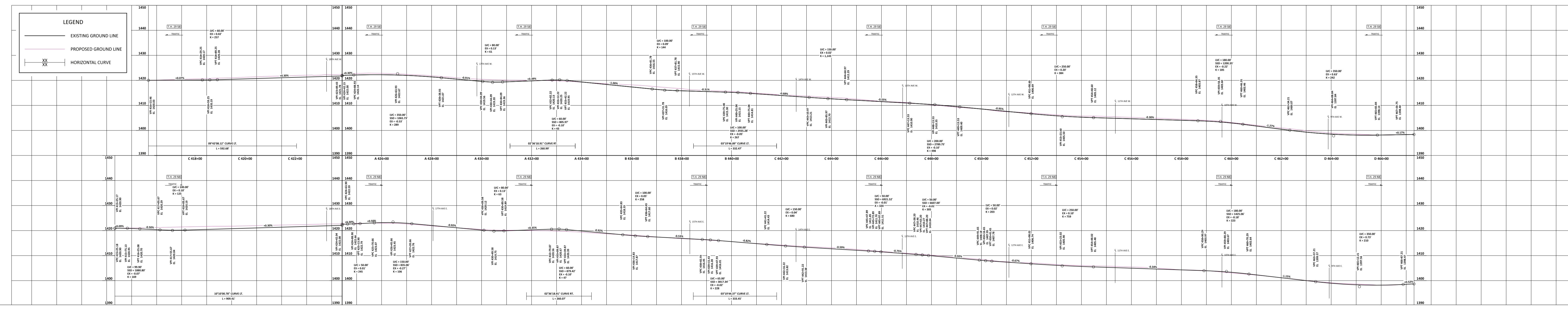
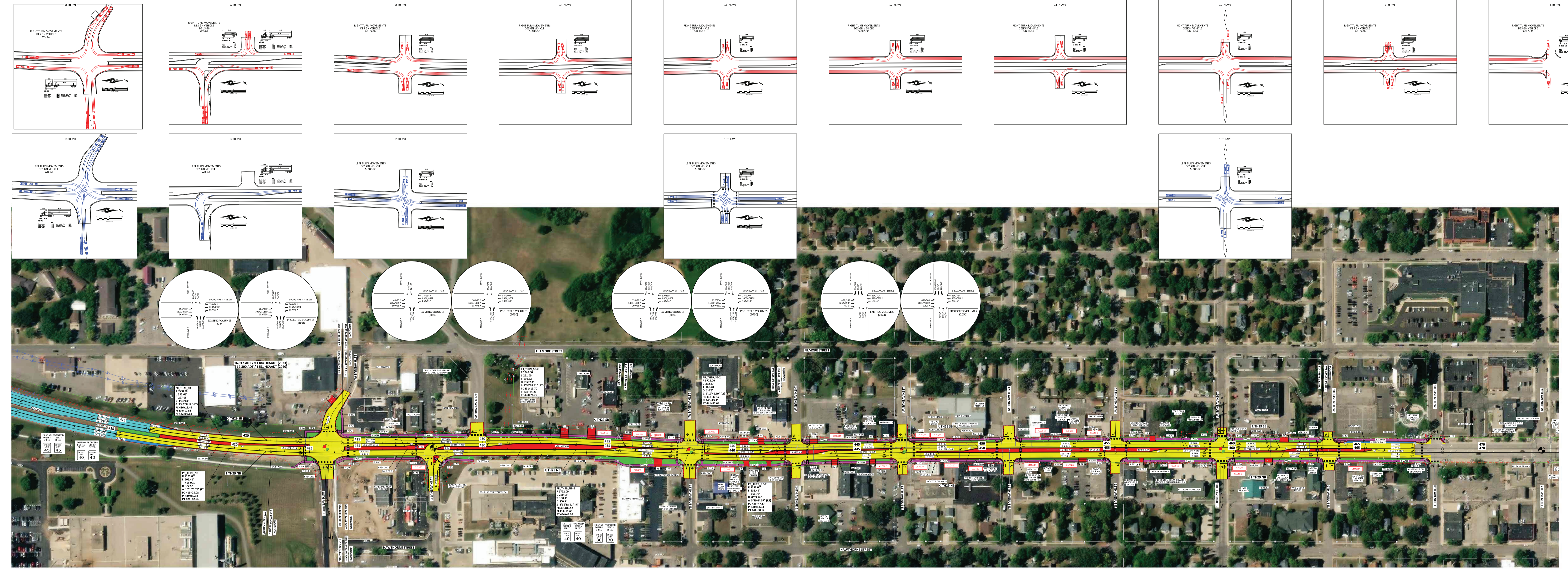
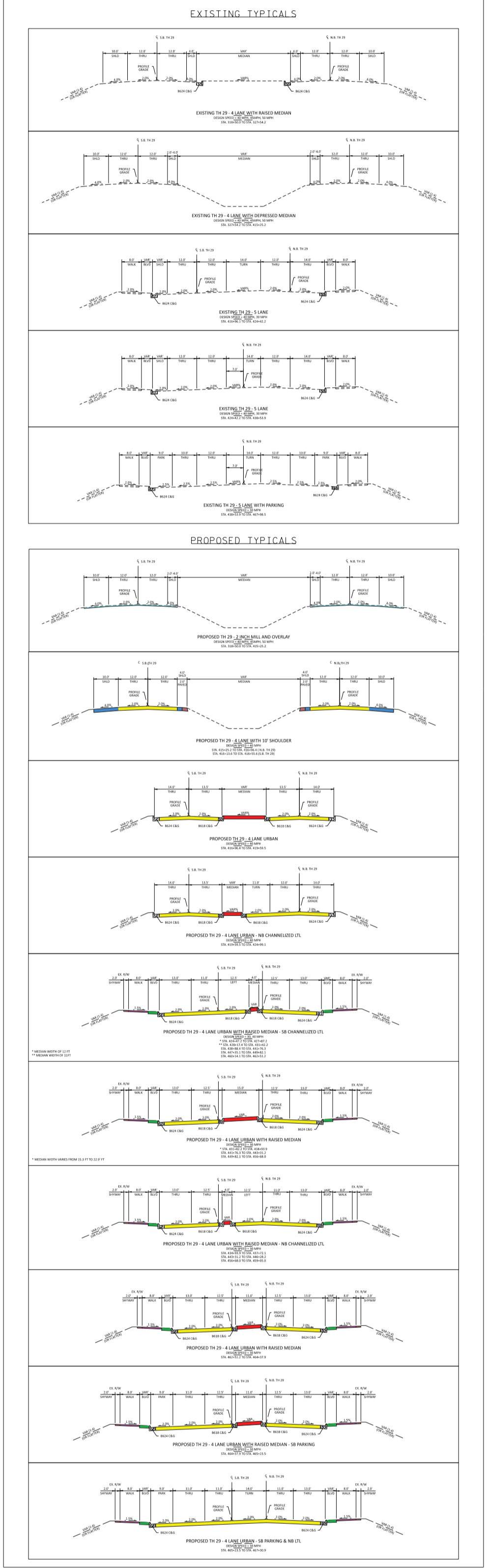
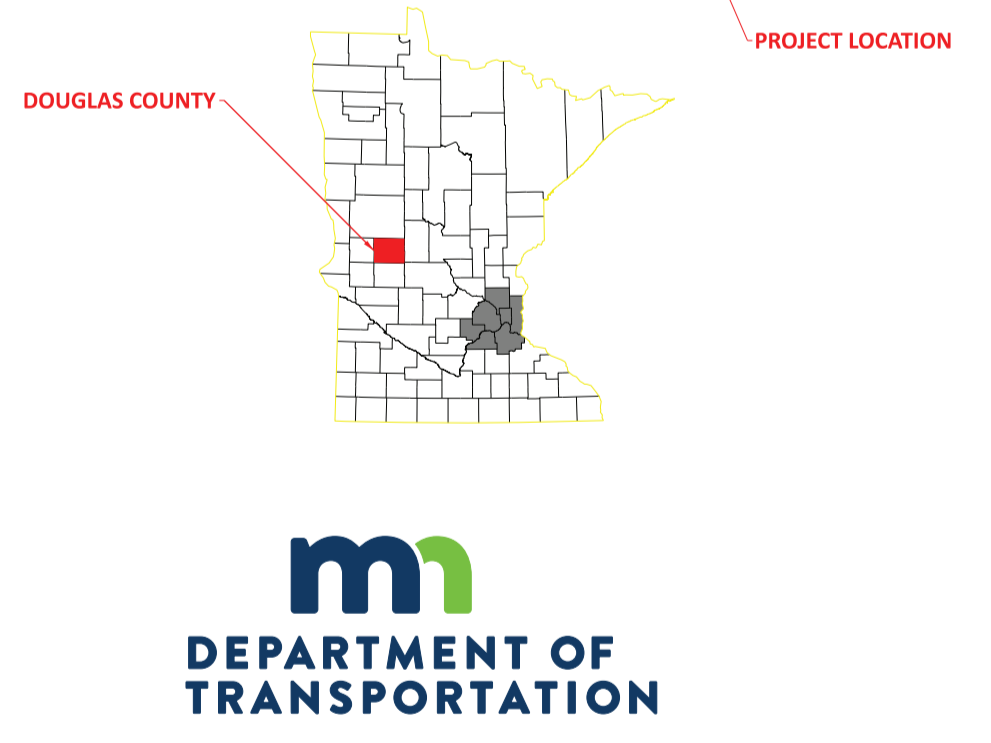
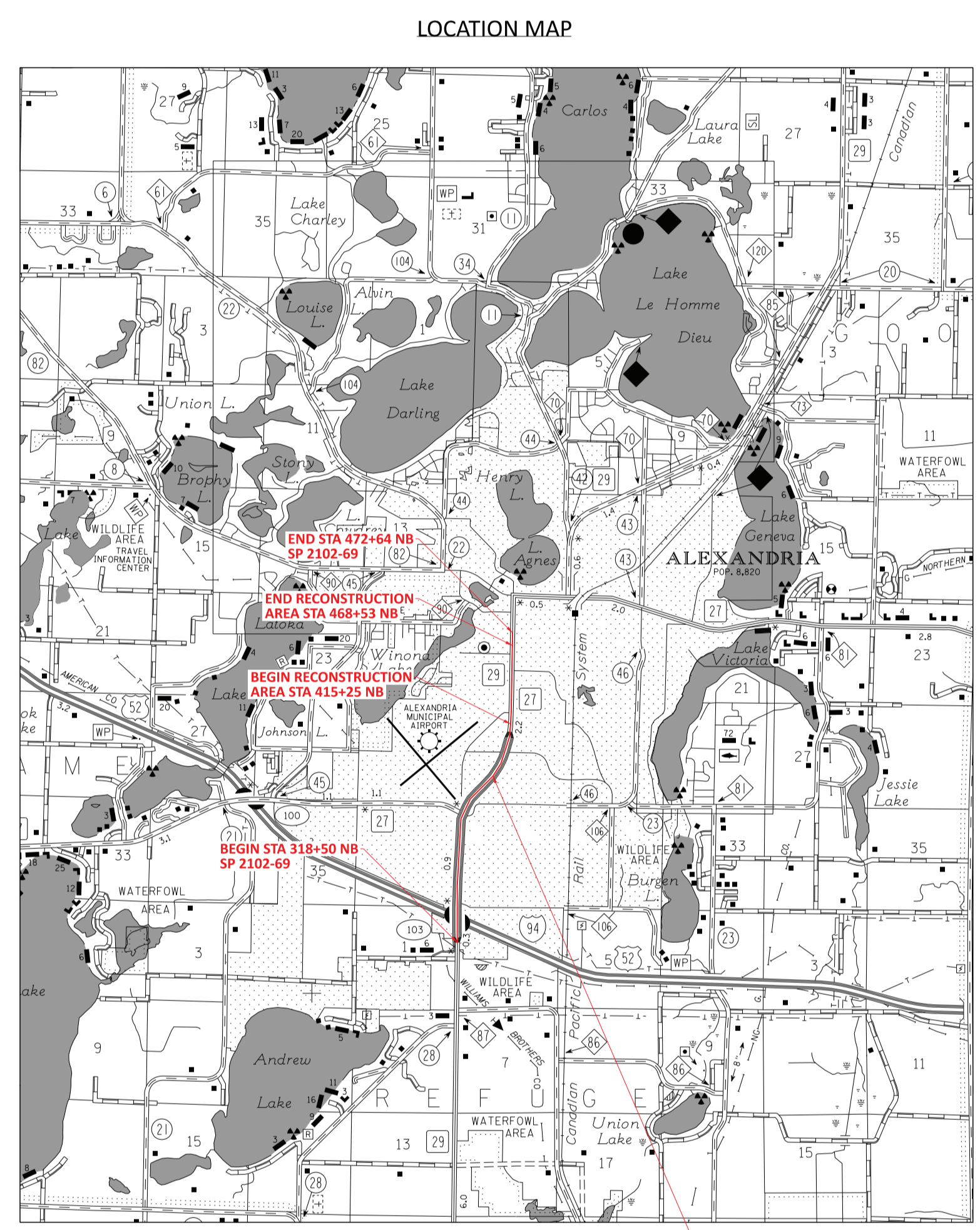


LAYOUT HISTORY
 The layout for this project is based on a plan view of the highest AADT in the district for an urban center of about 17,000 vehicles. The City of Alexandria would like to include a walking surface, a large portion of the sidewalk and planting strip used for bicycle infrastructure, and a portion of the sidewalk. The portion of the sidewalk included in this project is currently a business use concrete surface. The sidewalk has been included in the project as a way that the sidewalk can be used for bicycle infrastructure. The project is to be a public-private partnership project. The project will include the sidewalk and planting strip, bicycle infrastructure, and a portion of the sidewalk and planting strip used for bicycle infrastructure. The project will be a public-private partnership project. The project will include the sidewalk and planting strip, bicycle infrastructure, and a portion of the sidewalk and planting strip used for bicycle infrastructure.

LAYOUT 1A
 Concept Level 1 provided to MDOT District 4 and MDOT District 5 for review. The project is to be a public-private partnership project. The project will include the sidewalk and planting strip, bicycle infrastructure, and a portion of the sidewalk and planting strip used for bicycle infrastructure.

Level 1 LAYOUT APPROVAL
 Prepared by: [Signature]
 Checked by: [Signature]
 Approved by: [Signature]
 Date: [Date]



- LEGEND**
- PROPOSED ROADWAY & SIDEWALKS
 - PROPOSED MEDIAN, CURB, AND DRIVEWAY IMPROVEMENTS
 - PROPOSED SIDEWALKS
 - WALK & BIKEWAY
 - CONCRETE TRAILS & SIDEWALKS
 - PROPOSED BOLLARDS & SIGNAGE
 - LANDSCAPE BOLLARDS
 - PROPOSED TRAFFIC SIGNAL
 - PROPOSED CONSTRUCTION LANE
 - WETLANDS
 - EXISTING RIGHT OF WAY - ROAD
 - EXISTING RIGHT OF WAY - CITY
 - PROPOSED RIGHT OF WAY
 - PROPOSED TEMPORARY EASEMENT
 - EXISTING CURBLINE